

Policy Name	Child Protection Policy	Policy No.	WPSH_PLC_003
Effective Date	April 2025	Date of Last Review	25th March 2025
Date of Next Review	March 2026	Person in-charge	Mr. Diybendu

Introduction:

The health, safety and well-being of all our children is of paramount importance to all the adults who work in our school. Our children have the right to protection, regardless of age, gender, race, culture or disability. They have a right to be safe in our school at Hamidiya.

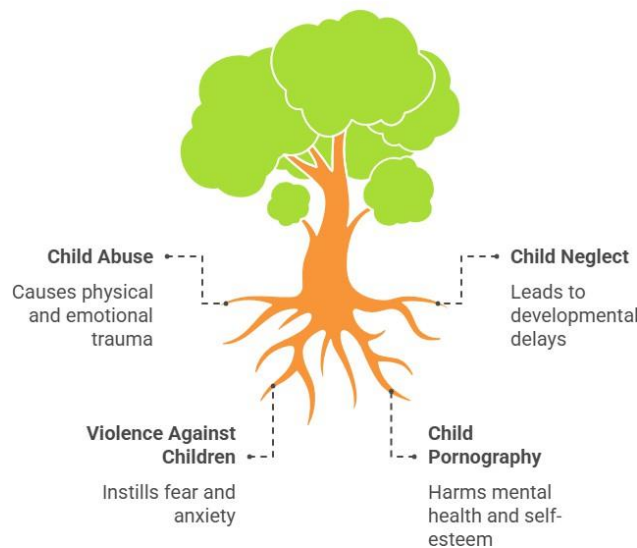
Protecting children is everyone's responsibility at our school and this includes reporting any act committed by a parent, Staff or any other person, to a child enrolled in the school which results in neglect, physical, emotional injury or sexual harm.

All staff have a duty and will report any suspected or disclosed issues of child protection to the Child Protection Team. If the threat is immediate or ongoing it will be reported to the appropriate local safeguarding authorities as set in place by the UAE.

There are 4 major areas that can create long term negative effect on children:

1. **Child Abuse:** Every action that would lead to the harm of the child.
2. **Child Neglect:** Failure of the parents to take necessary actions to preserve the child's life and needs.
3. **Violence against children:** Use of force against any child by any one that would lead to harm.
4. **Child Pornography:** Child is shown in a disgraceful manner in a sexual act or sexual show.

Long-Term Negative Effects on Children



Purpose:

The safeguarding of children and young people from harm is our highest priority. Our students have a right to feel safe and protected from significant physical and emotional harm both inside and outside of school. This policy is a crucial part of promoting the welfare of our students; it is designed to inform our staff regarding the signs of child abuse and to equip them with the knowledge on what to do in the event of suspected abuse. This policy defines abuse, outlines signs of abuse and explains the procedures for investigating and reporting suspected cases.

Aims:

We aim to safeguard and promote the welfare of children at the school.
This is in compliance with:

- UAE Federal Law NO. 3 of 2016 on Child Rights.
- UAE Federal Law No. 3 of 1987 on Penal Code.
- To ensure effective communication between all staff when dealing with child protection issues.
- To inform all parties of the correct procedures to use in the case of a child protection issue.
- Wadeema's Law.

Legal Requirements in the UAE:

- Crimes of abuse and penalties are defined in Federal Law (3); which was updated in June 2016 to include the Child's Rights Law. Updated article will be provided when available. Below are the specific articles pertaining to each type of abuse as listed in the previous Federal Law (3).
- Physical Abuse Crimes: Articles 336-343
- Sexual Abuse Crimes: Articles 354, 356, 358, 363, 364

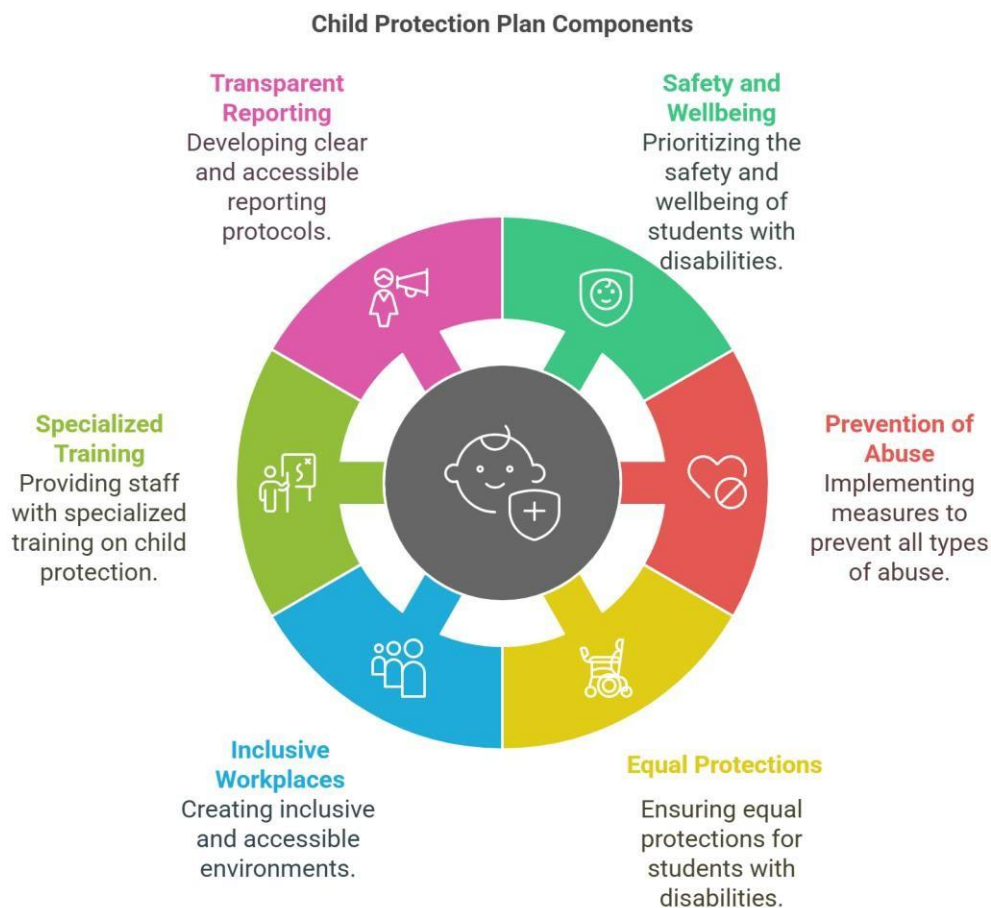
***Article 362 pertains to the distribution of drawings, photos, films**

- Emotional Abuse Crimes: Articles 351, 352, 372-374
- Neglect: Articles 348-350

Child Protection procedures: When a student is exposed to any form of severe abuse, the school Child Protection Officer, after collecting data and taking the necessary measures to protect the child, contacts the Child Protection Department and reports the case.

Inclusive and accessible environments:

A strong school-based child protection plan for Students of Determination emphasizes their safety and wellbeing first while recognizing their specific vulnerabilities. This policy includes steps to stop all types of abuse, including neglect, emotional, sexual, and physical abuse. Most importantly, it guarantees that students with disabilities receive the same protections as their counterparts without impairments, with specialized accommodations and support networks catered to their particular requirements. Creating inclusive and accessible workplaces that reduce hazards, providing staff with specialized training on recognizing and responding to abuse in kids with disabilities, and developing transparent and easily accessible reporting protocols are all part of this.



ROLES AND RESPONSIBILITIES

Principal will:

- Comply with the provisions of this policy.
- Publish a Child Protection and Safeguarding policy to protect students from any abuse and neglect provided it meets the minimum requirements of what is included in this policy and does not contradict any of its provisions.
- Ensure that procedures to prevent situations that could lead to the abuse or neglect of students are in place and understood by all school staff and leaders.
- Ensure the supervision of students at all times while in school's care.
- Ensure that there is priority emphasis within the school on the protection of the students and for taking immediate actions when there is suspicion of cases of student abuse or neglect.
- Ensure that students can safely report their concerns about abuse and/or neglect without fear of retribution or punishment.
- Ensure that staff and others can safely report their concerns about the potential exposure of any student to abuse and/or neglect without fear of retribution or punishment.
- Gain views from students and parents regarding security and protection within the school.
- Immediately report any case of potential abuse and/or neglect of students as stated by this policy.
- Ensure that all staff and administrators targeted for student protection training, have fully attended and participated in all training sessions.
- Conduct Orientation sessions for parents/guardians upon student registration or enrollment and at the start of every school year to promote this policy and to inform them of their roles and responsibilities, and their rights and duties.
- Immediately suspend any staff member who is suspected of an offence involving student abuse and/or neglect on a temporary basis until the suspicion is adjudicated.

Child Protection Team Will:

- Implement the child protection policy and procedures.
- Encourage good practice by promoting and championing the child protection policy and procedures.
- Monitor and review the child protection policy and procedures to ensure they remain current and fit for purpose.
- Regularly report to the Management/Committee/Board.
- Raise awareness of the Code of Conduct for working with children to parents/guardian, adults and children.
- Challenge behavior which breaches the Code of Conduct.
- Keep abreast of developments in the field of child protection by liaising with the Child Protection Officer, attending relevant trainings or events.
- Organize appropriate training for all adults working/volunteering with children in the school.
- Establish and maintain contact with local statutory agencies including the police and social services.
- Respond appropriately to disclosures or concerns which relate to the well-being of a child.
- Maintain confidential records of reported cases and actions taken.
- Where required liaise with the Child Protection Officer and/or statutory agencies and ensure they have access to all necessary information.

All School Staff will:

- Report a suspected case of abuse and/or neglect upon immediate discovery
- Supervise students at all times while in school's care.
- Understand this policy to address suspected or alleged student abuse or neglect cases.
- Attend and participate in mandated student protection trainings.

Specific Responsibilities of the School Doctor/Nurse and Counsellor:

- The school Doctor/Nurse or Counsellor may be requested to provide physical treatment and emotional support after a child has been abused.
- The Doctor or Nurse may be required to conduct an examination if there are physical injuries and write an initial report about the child's physical and emotional condition.
- The Doctor/ Nurse and/ or Counsellor can provide positive encouragement to the child, liaise with family members determine how best to promote the child's safety both at school and at home.
- Child abuse can leave deep emotional scars and the School Doctor or Nurse should recognize

these and help develop a rehabilitation plan.

- In some cases, the child may have to take medication as a result of the abuse. The School Doctor or Nurse should ensure that all standards and procedures for administering medications in the school setting are met.

Specific responsibilities of the HR department and Security

When recruiting any member of the teaching staff or support staff with access to children, all reasonable steps should be taken to ensure compliance as far as possible with the following:

- Provision of an up-to-date policy 'good conduct' letter and/or criminal records check.
- That two or more references are taken up from previous employers with follow-up questions with regard to the applicant's compliance with any Child Protection procedures.
- A declaration signed by the prospective employee on any application form and/or contract that he/she has not been convicted or undergoing court or disciplinary proceedings for any offence involving child abuse and/or breach in exercising a duty of care for children.
- The Security staff undertake to be vigilant and adhere to the procedures governing the access, detailed record-keeping.
- Provision of a Visitor's Pass to be worn for ease of identification and monitoring of visitors to the school.

Parents/Legal Guardians will:

- Cooperate with the school administration and staff, answer all inquiries related to the student's behavior, academic performance and respond to their feedback and guidance.
- Attend all scheduled school parent meetings.
- Communicate any concerns, observations, or changes in their child's behavior to the school administration or to the concerned school staff.

When to be concerned

Staff should be concerned if a student:

- Has any injury which is not typical of the bumps and scrapes normally associated with the child's activities.
- Regularly has unexplained injuries.
- Frequently has injuries even when apparently reasonable explanations are given.
- Offers confused or conflicting explanations about how injuries were sustained.
- Exhibits significant changes in behavior, performance or attitude.
- Indulges in sexual behavior which is unusually explicit and/or inappropriate to his or her age.
- Discloses an experience in which he or she may have been harmed.

Recording disclosure:

When a pupil has made a disclosure, the member of staff should:

- Make some brief notes as soon as possible after the conversation;
- Not destroy the original notes in case they are needed by a court;
- Record the date, time, place and any noticeable non-verbal behavior and the words used by the child;
- Draw a diagram to indicate the position of any bruising or other injury;
- Record statements and observations, rather than interpretations or assumptions.



مدرسة وودلم بارك

Woodlem Park School

Al-Hamidiya, Ajman

CHILD PROTECTION POLICY

Child Protection Committee

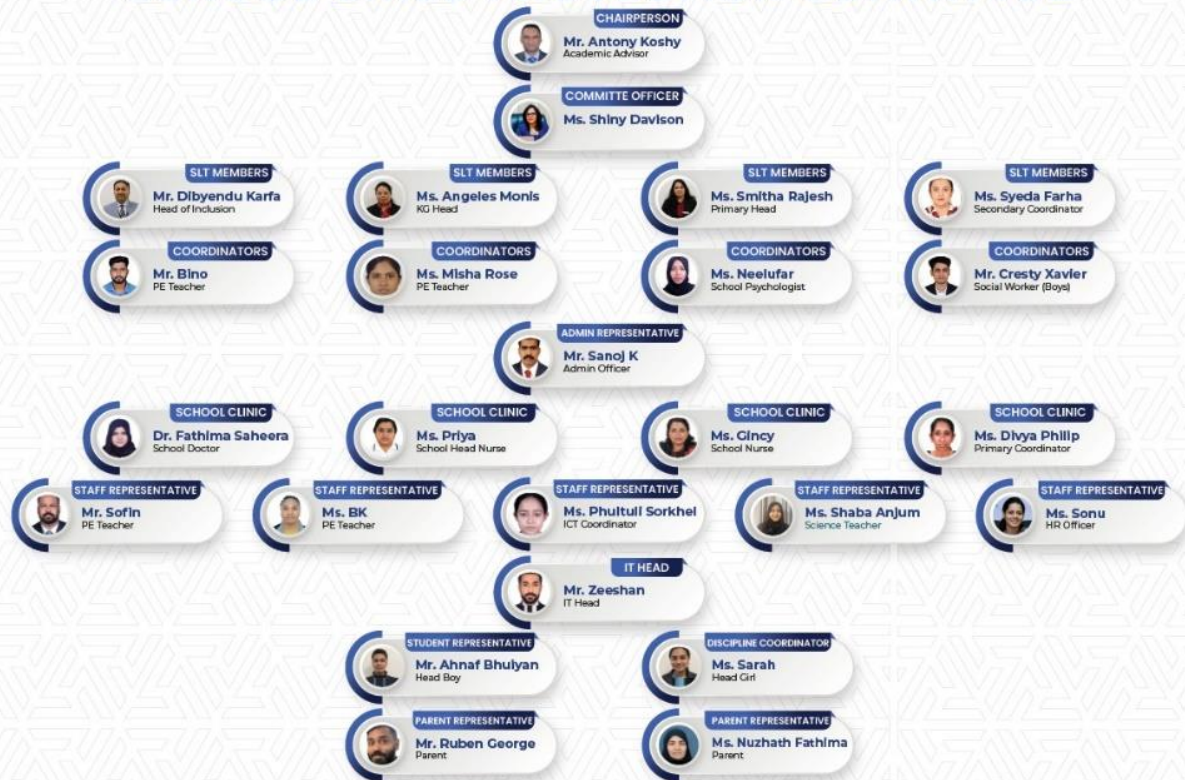


مدرسة وودلم بارك

Woodlem Park School

Al-Hamidiya, Ajman

SCHOOL CHILD PROTECTION COMMITTEE



APPENDIX A

DEFINITIONS:

1. a) **Neglect** – The persistent or severe neglect of a child which results in impairment of health or development
2. b) **Physical Abuse** – Actual or likely physical injury to a child, or failure to prevent physical injury or suffering
3. c) **Sexual** – Actual or likely exploitation of a child by involvement in sexual activities without informed consent or understanding, or that violate social taboos or family roles
4. d) **Emotional** – Actual or likely severe adverse effects on the emotional and behavioral development of a child by persistent or severe emotional ill-treatment or rejection
5. e) **Potential abuse** – Situations where children may not have been abused but where social and medical assessments indicate a high degree of risk that they might be abused in the future, including situations where another child in the household has been abused, or where there is a known abuser.
6. f) **Bullying** – Any persistent and uninvited behavior which insults, hurts or intimidates someone (includes cyber bullying).

Signs of possible abuse include: (These are not exhaustive or necessarily indicative of abuse).

1. a) **Neglect** – Constant hunger or tiredness; frequent lateness or absence, poor personal hygiene, untreated medical problems; running away, stealing, low self-esteem
2. b) **Physical** – Unexplained injuries/bruises; improbable or evasive excuses, untreated injuries; fear of treatment or medical help, fear of physical contact, fear of going home, over aggressive or defensive tendencies, fear of removing clothes, bites, lashes, facial injuries.
3. c) **Sexual** – Tendency to cling, tendency to cry, genital itching, acting 'like a baby', distrust of familiar adults, wetting and/or soiling, fear of undressing, throat infections, depression, fearful/panic attacks.
4. d) **Emotional** – Physical, emotional, developmental delay; over-reaction to mistakes; tearful, fear of losing, fear of parents being contacted, stealing, thumb-sucking, rocking, anxiety, Munchausen Syndrome by proxy (If a parent of child deliberately fabricates or induces illness in that child). Signs may include; perceived illness, doctor shopping, enforced illness, fabricated illness, poisoning e.g. with salt, induced seizures, suffocation, bleeding, rashes, tampering with vomit/urine. Child may exhibit unusual or unnaturally prolonged illness; symptoms/signs have a temporal association with mother's presence, mother unusually at ease in hospital environment, multiple illnesses/similar symptoms in family, unexplained death of siblings.

APPENDIX B

WHAT TO DO ON DISCLOSURE

Stay calm

(Don't over-react, however shocked you may be)



Listen, hear and believe

(Listen carefully, take it seriously)



Give time for the person to say what they want

(Don't make assumptions and don't offer alternative explanations, ask questions beginning with -Tell me about... Explain... Describe... Avoid 'who, what, when, where' questions)



Reassure and explain that they have done the right thing in telling.

(Do not promise confidentiality; explain that only those professionals who need to know will be informed)



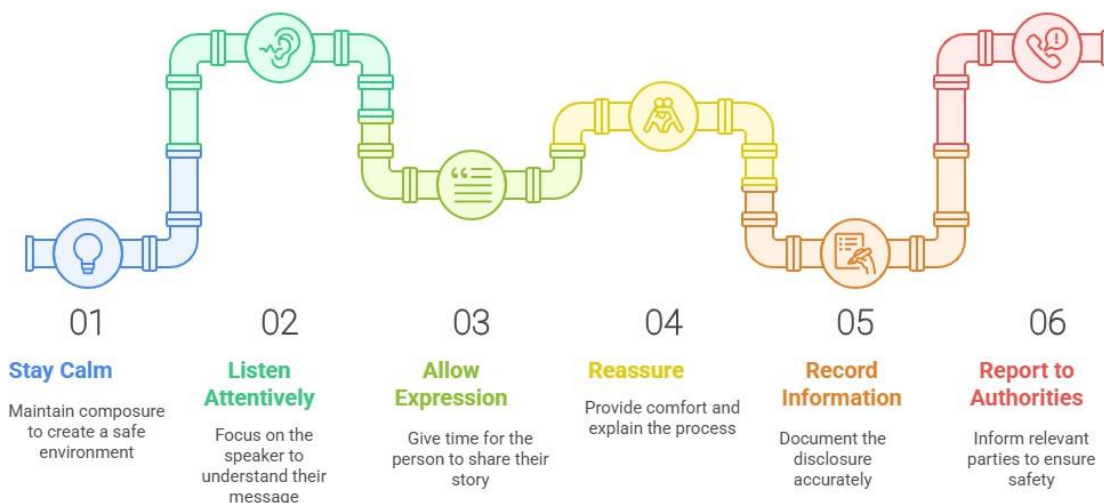
Record in writing as near verbatim as possible and as soon as possible on a Disclosure Form

(Use the child's own words, make your record as soon as possible after the event, so that you don't forget anything, and include information about what action was taken afterwards)



Report to the Child Protection Team Lead & to the Principal

Responding to Sensitive Disclosures



APPENDIX C

WOODLEM PARK SCHOOL, HAMIDIYA

DISCLOSURE OF ABUSE FORM

Date of reporting

Reported by:

Designation:

Description of the Incident:

Date and Time of the Incident:

Location of the Incident:

People involved (if any):

Detailed description of the Incident:



مدرسة وودلم بارك

Woodlem Park School

Al-Hamidiya, Ajman

CHILD PROTECTION POLICY

Specific Policy (ies) violated:

Impact of the Incident (Describe how the incident affected school / you or others involved)

:

Additional Information:

- Attach any relevant evidence, such as witness statements (video/written application / WhatsApp messages / eMail), screenshots etc.
- State if you have reported this incident to anyone else previously

Signature and date of the complainant



مدرسة وودللم بارك

Woodlem Park School

Al-Hamidiya, Ajman

CHILD PROTECTION POLICY

Details / report of the measures or actions taken by the committee:

Names of the committee members, designations and signatures:

- 1.
- 2.
- 3.
- 4.
- 5.
- 6.

Actions / measures taken:

--

Date: __/__/__

Venue: _____

Time: _____

Regards,

Principal.